



# Installation and Administration Guide

SMB/CIFS, NFS, FTP, RSYNC and HTTP

## TABLE OF CONTENTS

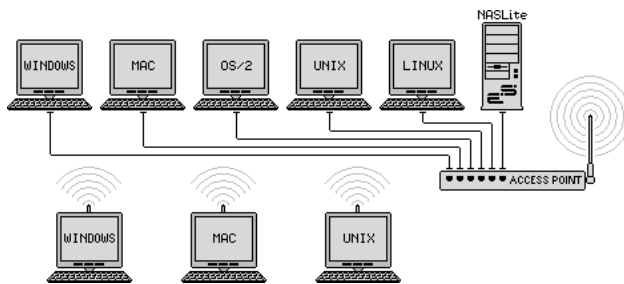
What is NASLite-2.....	3
Why Use NASLite-2.....	3
NASLite-2 Versions.....	4
Getting NASLite-2.....	4
Basic Computer Requirements.....	4
Hardware Setup.....	4
A Few Words About RAID.....	6
Initial NASLite-2 CDD Setup.....	7
Initial NASLite-2 HDD Setup.....	7
Initial NASLite-2 USB Setup.....	8
Initial NASLite-2 Configuration.....	8
Remote Administration.....	11
Remotely-Hosted Storage.....	11
NASLite-2 Security.....	13
Using The SMB/CIFS Server.....	13
Using The NFS Server.....	13
Using The FTP Server.....	14
Using The HTTP Server.....	14
Using The RSYNC Server.....	15
Content Backup Mirroring.....	15
NASLite-2 as an Appliance.....	16
Disk Health and Monitoring.....	16
Administration Utility.....	16
Main Options Menu.....	17
Network Configuration Menu.....	17
Service Configuration Menu.....	18
Storage Configuration Menu.....	19
Disk-N Configuration Menu.....	19
General Storage Options Menu.....	20
Tools and Utilities Menu.....	20
Status Information Pages.....	21
Upgrading form Previous Versions of NASLite.....	24

## TABLE OF CONTENTS

Source Components .....	24
Internet Resources .....	24
Copyrights and Trademarks .....	25
Server Elements Software License Agreement.....	25
Server Elements Software License Terms .....	25
Server Elements Limited Warranty Statement.....	25

## What is NASLite-2

NASLite-2 is a Network Attached Storage (NAS) Server Operating System designed to transform a basic computer into a dedicated SMB/CIFS, NFS, FTP, HTTP and RSYNC file server. NASLite-2 is intended for use in any low-security environment or application that requires the simultaneous availability of large amounts of inexpensive networked storage. A single NASLite-2 server is capable of exporting terabytes of networked storage and is capable of handling 50 or more networked users easily and efficiently even when running on modest hardware. By design, NASLite-2 is a community workgroup server and does not support features such as user management, disk quotas or the ability to join domains. However, it is very easy to set-up, to administer and to use.



Typical Multi-OS Network Configuration

## Why Use NASLite-2

NASLite-2 is optimized to perform at maximum efficiency with minimum of hardware requirements. Designed with simplicity in mind, NASLite-2 is compact, stable and very reliable. NASLite-2 boots directly into RAM where it runs in a modestly sized 8MB RAM-Disk. This approach ensures consistent and reliable OS operation. NASLite-2 offers the following features and benefits:

- Easy to operate and to administer
- Inexpensive to run and maintain
- Boots directly into RAM
- Remote administration through TELNET
- Simple configuration menus
- Stable and reliable

- SMB/CIFS, NFS, FTP, HTTP and RSYNC exported file systems
- BIOS independent fixed disk drive support
- Support for IDE, SATA, SCSI, USB and FireWire connected fixed disk drives
- Support for multiple IDE, SATA, SCSI, USB and FireWire interfaces
- Dependable hardware RAID support
- Remote NFS volumes re-export
- HTML-based status report pages
- Limited ACPI support
- S.M.A.R.T. support
- Large partition and file support
- Extremely compact in size (Runs in an 8MB RAM Disk)
- Low hardware requirements
- Wide range of PCI hardware support (ISA and EISA not supported)

NASLite-2 is designed to operate on commodity x86 computers. It is also well suited for re-using older PCs that are still operational but are too limited or slow for use as desktop computers. In addition, NASLite-2 enables older computers with BIOS limitations to use contemporary, large-capacity IDE fixed disk drives without the need for additional hardware.

As a network file server, NASLite-2 may very well offer the highest possible storage capacity for the money. NASLite-2 servers of 1 terabyte or more in storage space can be built for only a few hundred US dollars.

For example, with NASLite-2 you can easily take a retired Pentium 200MHz computer, install a couple of 300GB fixed disk drives and have a fast, reliable 600GB NASLite-2 file server for a few dollars above the cost of the fixed disk drives.

Reusing an older computer is not the only approach one can take in building a NASLite-2 server. Servers built using newer hardware provide unmatched performance and can easily handle 12 or more storage disk drives. Such servers can be used to centralize many terabytes of storage into a single, low-cost package that is simple to administer and to use.

**NOTE:** *NASLite-2 is fully compatible with storage media from previous NASLite file server versions.*

## NASLite-2 Versions

NASLite-2 is available in three different versions as follows:

- **NASLite-2 CDD** – Boots off of a CD-ROM and saves configuration settings to a floppy disk. Benefits include a robust read-only operating system boot media as well as quick and painless upgrade process.
- **NASLite-2 HDD** – Boots off of and saves configuration settings to a fixed disk. Benefits include installation on fixed media such as a fixed disk partition or a dedicated IDE Flash disk. Configuration floppy disk is not required.
- **NASLite-2 USB** – Boots off of and saves configuration settings to USB flash. Benefits include installation on convenient USB Flash as well as other read/write USB-attached bootable media such as LS-120 or ZIP disks. Configuration floppy disk is not required.

Although the installation procedures differ slightly between the three versions, regular operation and administration of NASLite-2 is the same regardless of version. The different versions are primarily intended to address differences in hardware configuration, hardware capabilities and deployment strategies.

## Getting NASLite-2

NASLite-2 CD-ROM or a downloadable CD-ROM ISO image is available for purchase from the Server Elements ([www.serverelements.com](http://www.serverelements.com)) website.

**NOTE:** *NASLite-2 is a commercial product and is not freely distributable. Please do not make or distribute illegal copies. Doing so is not only illegal, but undermines our efforts and further impedes our ability to develop the product.*

## Basic Computer Requirements

NASLite-2 is a network file server, so a fast computer is usually not necessary. Basic requirements are:

- Pentium or better processor
- PCI bus
- 64M or more of RAM
- 1 or more fixed disk drives
- Appropriate bootable media
- Conventional floppy disk drive (NASLite-2 CDD Only)
- PCI or on-board network interface adapter

**NOTE:** *It is possible to boot NASLite-2 CDD using a SCSI, USB, FireWire or other CD-ROM drive provided the BIOS supports booting from such a device. The CD-ROM drive is used only to boot NASLite-2 CDD. CD-ROM content cannot be exported to the network.*

**NOTE:** *A conventional floppy disk drive of any type can be used for NASLite-2 CDD configuration provided it is the primary floppy disk drive (DOS drive A: or Linux device /dev/fd0).*

In dedicated file servers, the performance is most often limited by the network speed. Although fast processors will usually not improve performance, there are cases where low-quality network cards may generate large amount if interrupt request traffic, thus drastically increasing the CPU workload. In most cases however, that should not be a problem and therefore fast processor may not be required.

A 200 MHz Pentium with 64M of RAM will be more than capable of servicing a typical small office. Additional RAM may be necessary if large-capacity fixed disks are used. For example, if 250GB fixed disks are used, 128M or more of RAM may be necessary for optimum performance.

## Hardware Setup

If you are preparing a computer for conversion to a NASLite-2 file server and wish to replace or add fixed disk drives, do this now and be sure the computer will boot with the new fixed disk drives installed. If you are adding new PCI-to-IDE, PCI-to-SATA, etc. interfaces, ensure that system IRQs are properly assigned and no conflicts exist. In addition, since different versions of NASLite-2 boot from a CD-ROM, fixed disk or USB device, it is necessary to verify and set the BIOS and the associated device to boot accordingly.

**NOTE:** On older computers, it's recommended that you set the BIOS IDE fixed disk drive configuration for all large IDE fixed disk drives to "NOT INSTALLED" in order to avoid boot problems. NASLite-2 does not use the BIOS to identify the available fixed disk drives. Computers with older BIOS may refuse to boot if unable to properly identify the installed fixed disk drives.

**NOTE:** It is possible to use NASLite-2 USB with older hardware even if the associated BIOS is unable to boot from USB-attached devices. The NASLite-2 USB distribution CD-ROM includes a bootable "Kicker" floppy disk designed to facilitate booting NASLite-2 USB even if the BIOS does not support bootable USB devices. A self-extracting "Kicker" floppy disk image is located in the /UTILITY folder of the distribution CD-ROM.

Unlike its predecessors, NASLite-2 supports a wide variety of storage media. IDE, SATA, USB, FireWire and SCSI attached fixed disks can be used, in any combination. Additional PCI-to-IDE, PCI-to-SATA, etc. interfaces can also be used in order to increase the total number of storage disks.

SCSI interface support in NASLite-2 is limited to the commonly available Adaptec, Future Domain and Qlogic interfaces. Drivers for more obscure SCSI interfaces are excluded in favor of a more complete set of SATA drivers.

IDE, SATA and SCSI storage interface drivers included with NASLite-2 are as follows:

- **IDE**
  - ADMA100 IDE Driver
  - ALi 15x3 IDE Driver
  - AMD PCI IDE Driver
  - ARTOP AEC62xx IDE Driver
  - ATI IXP IDE Driver
  - CMD64x IDE
  - Compaq Triflex IDE
  - Cypress CY82C693 IDE
  - Cyrix/NS 5530 IDE
  - Highpoint 34x IDE
  - Highpoint HPT366 IDE
  - Intel PIIX IDE
  - NS SC1200 IDE
  - NS87415 IDE
  - Older Promise IDE
  - Opti621 IDE
  - Promise PDC20268 and higher
  - RZ1000 IDE
  - Serverworks OSB4/CSB5/CSB6 IDE
  - Sil IDE

- SIS IDE
- SLC90E66 IDE
- Tekram TRM290 IDE
- VIA IDE
- Generic IDE (Without DMA Support)

- **SATA**

- Promise SATA Controller Driver
- Vitesse VSC7174 SATA Controller Driver
- VIA SATA Controller Driver
- ULi Electronics SATA Controller Driver
- AHCI SATA Controller Driver
- Intel PIIX/ICH ATA Controller Driver
- K2 SATA Controller Driver
- Silicon Integratad Systems SATA Controller Driver
- Silicon Image SATA Controller Driver
- Pacific Digital Corporation QStor SATA Controller Driver
- Promise ATA TX2/TX4/TX4000 Controller Driver
- NVIDIA nForce SATA Controller Driver

- **SCSI**

- Adaptec AIC-7xxx Series SCSI Controller Driver
- BusLogic MultiMaster and FlashPoint SCSI Host Controller Driver
- Future Domain TMC-3260 SCSI Controller Driver
- Qlogic ISP1020 Intelligent SCSI Controller Driver
- Qlogic ISP2x00 SCSI-FCP Driver
- Qlogic QLA1280 (Ultra2) and QLA12160 (Ultra3) SCSI Controller Driver

For a complete list of IDE, SATA and SCSI storage interface devices supported by the above drivers, refer to the NASLite-2 Hardware Reference Guide

NASLite-2 utilizes RAID via a number of supported SCSI and SATA hardware RAID devices. Hardware RAID presents the available disks array as a single volume, so NASLite-2 can access the RAID storage in the same way as it would a single disk. A general list of included hardware RAID drivers is as follows:

- Adaptec AAC Series RAID Controller Driver
- Adaptec I2O RAID Controller Driver
- GDT Disk Array Controller Driver
- IBM ServeRAID Controller Driver
- 3ware Storage Controller Driver
- LSI Logic MegaRAID Controller Driver

For a complete list of hardware RAID devices supported by the above drivers, refer to the NASLite-2 Hardware Reference Guide

Many of the supported hardware RAID devices are capable of handling a disk change while powered. Commonly known as hot-swapping, this capability can be very handy in production environments where taking down a server for maintenance is not an option. If your target application requires hot-swapping, an appropriate hardware RAID card will be necessary.

To connect the NASLite-2 server to the network, a PCI network interface is required. Many computers utilize a motherboard with a built-in or on-board PCI network interface and therefore will work fine. A general list of included PCI network interface adapters drivers as follows:

- 3Com 3c59x/3c9xx Ethernet Driver
- 3Com Typhoon Family Ethernet Driver
- 8390 Ethernet Driver
- Adaptec Starfire Ethernet Driver
- AMD8111 based 10/100 Ethernet Driver
- Broadcom 4400 10/100 Ethernet Driver
- Davicom DM910X Ethernet Driver
- DE4x5 Ethernet Driver
- Digi Ethernet Driver
- Digital 21\*4\* Tulip Ethernet Driver
- HP CASCADE Ethernet Driver
- Intel(R) PRO/100 Ethernet Driver
- MII Ethernet Driver
- Myson MTD-8xx Ethernet Driver
- National Semiconductor DP8381x Ethernet Driver
- NE2000 Ethernet Driver
- PCnet32 and PCnetPCI Ethernet Driver
- RealTek RTL-8139 Ethernet Driver
- RealTek RTL-8139C+ Ethernet Driver
- Reverse Engineered nForce Ethernet Driver
- SiS 900 PCI Ethernet Driver
- SMC 83c170 EPIC Ethernet Driver
- Sundance Alta Ethernet Driver
- TI ThunderLAN Ethernet Driver
- VIA Rhine Ethernet Driver
- Winbond W89c840 Ethernet Driver

For a complete list of PCI network interface devices supported by the above drivers, refer to the NASLite-2 Hardware Reference Guide

NASLite-2 provides built-in support for a number of common gigabit network interfaces. NASLite-2

includes the following gigabit network interface drivers:

- 3Com 3c59x/3c9xx Ethernet Driver
- AceNIC/3C985/GA620 Gigabit Ethernet Driver
- Broadcom Tigon3 Gigabit Ethernet Driver
- D-Link DL2000-based Gigabit Ethernet Driver
- Intel(R) PRO/1000 Gigabit Ethernet Driver
- National Semiconductor DP83820 10/100/1000 Gigabit Ethernet Driver
- Packet Engines 'Hamachi' GNIC-II Gigabit Ethernet Driver
- Packet Engines Yellowfin G-NIC Gigabit Ethernet Driver
- RealTek RTL-8169 Gigabit Ethernet Driver
- SysKonnect SK-NET SK-98xx Gigabit Ethernet Driver

For a complete list of PCI gigabit network interface devices supported by the above drivers, refer to the NASLite-2 Hardware Reference Guide

NASLite-2 also provides limited support for a number of ACPI (Advanced Configuration and Power Interface) features. Most notably, NASLite-2 will allow for proper shutdown of supported ACPI-enabled motherboards using the associated front panel power button. That capability is extremely convenient when NASLite-2 is operated as an appliance without an attached keyboard and monitor. In other words, depressing the power button will have the same effect as shutting the server down via the Administration Utility.

NASLite-2 also exports some selected ACPI status values via the Status information pages. ACPI-specific information can be viewed in the ACPI section at the bottom of the System Status page (See Status Information Pages Section).

## A Few Words About RAID

RAID stands for Redundant Array of Independent (or, originally: Inexpensive) Disks. RAID is used to get fault tolerance and/or high performance by combining multiple hard disks. There are several levels of RAID, not all of which are fully redundant or fault tolerant. Below is a list of common RAID levels:

- RAID 0 - Bit striping
- RAID 1 - Mirroring

- RAID 3 - Bit striping with parity
- RAID 4 - Block striping with parity
- RAID 5 - Block striping with distributed parity

For server systems, RAID has been common for years. But also for home computers, RAID can be very useful. Hard disks crash after a certain period of time and the manufacturer's 5 year warranty will not help in recovering lost data files.

RAID implementations contain components such as RAID tables defining the configuration of RAID arrays, data structures to store the descriptors for cached data, engine(s) for calculating parity and the logic for handling I/Os to and from RAID arrays. These components may be implemented in software, typically in kernel-mode, or embedded in the controller for the secondary storage devices using which the RAID arrays are created.

There are many arguments one can present regarding which alternative is better. Generally, software RAID solutions are less expensive, but do place a higher workload onto the system processor as well as require specialized operating system configuration and maintenance. On the other hand, hardware RAID handles all RAID-specific tasks independently of the operating system and requires little or no specialized configuration.

In the event of failure, RAID arrays must be rebuilt. The first step is the exchange of the faulty disk with a new and fully operational replacement. The second stage is the actual rebuilding of the array. Often, poorly configured hardware and lack of administrator proficiency result in data loss. That can be especially true with software RAID.

Hardware RAID is considerably more robust and simpler to configure, maintain and operate. Hardware RAID is a superior solution to software RAID in a networked environment as is typical for servers. Its benefits are even more significant when running applications with high CPU utilization or when operating servers with marginal or low CPU/RAM resources.

**NOTE:** RAID of any kind is not a substitute for a good backup. The purpose of RAID is to provide performance improvement or media redundancy and not backup facilities. Deleting files from a RAID array, for all intent and purposes, is irreversible.

## Initial NASLite-2 CDD Setup

For the initial NASLite-2 CDD setup, you'll need to have a monitor and a keyboard connected to the computer. A clean, formatted floppy disk is also required and will be used to store the NASLite-2 CDD configuration settings.

NASLite-2 CDD does not need to be installed on a fixed disk like most operating systems. It boots directly from the CD-ROM and runs in 8MB of RAM Disk.

To boot NASLite-2 CDD, make sure the computer BIOS is set to boot from the CD-ROM, Insert the NASLite-2 CDD CD-ROM in the boot drive and turn on the computer. At this point it is a good idea to keep the configuration floppy disk outside of the floppy disk drive. After the boot sequence is complete, the initial login screen will be displayed. Insert the configuration floppy disk into the floppy disk drive after the login screen is visible.

## Initial NASLite-2 HDD Setup

This is very much a conventional installation, so bootable IDE fixed disk, an IDE Flash drive or equivalent are necessary as a destination for the install. NASLite-2 HDD boot files take up very little space and using a 16MB or larger Flash should be sufficient. If a fixed disk is used, it is possible to configure and use the remaining capacity of the fixed disk as storage.

For the initial NASLite-2 HDD setup, you'll need to have a monitor and a keyboard connected to the computer. To begin installation, boot from the distribution CD-ROM and allow the setup utility to display the initial menu screen.

**NOTE:** *Installing NASLite-2 HDD on a disk will reformat the disk in its entirety. Any existing data on the disk will be lost and should be backed up prior to installation.*

Choose a destination disk at the NASLite-2 HDD Installation Utility Menu Screen. Follow the Installation Utility on-screen instructions to complete the process.

Once installation is complete, the computer is ready to boot NASLite-2 HDD. Turn on the computer and make sure the BIOS is set to boot from the



appropriate disk. After the boot sequence is complete, the initial login screen will be displayed.

## Initial NASLite-2 USB Setup

Since NASLite-2 USB is distributed on a CD-ROM, a user-supplied USB Flash drive is required. Although most USB Flash drives will work with most motherboards capable of booting from USB, there are some motherboards that simply will not boot from some USB Flash drives. Refer to your motherboard and BIOS documentation to determine if the USB Flash drive you intend to use is compatible with your motherboard.

The distribution CD-ROM provides a special utility that facilitates the programming of your USB Flash drive. You'll need a computer with a bootable CDROM and USB support. The process is straightforward and is performed as follows:

1. With the PC powered OFF, insert the USB Flash drive into the USB port. **Ensure that there are no other USB storage devices connected to the PC at this time.**

**NOTE:** *Some BIOS/USB Flash drive combinations are more finicky than others. On rare occasions, in order to facilitate proper initialization, it may be necessary to power down the computer completely before inserting the USB Flash drive into the computer's USB port*

2. Boot the computer with the NASLite-2 USB distribution CD-ROM. If the utility fails to detect the USB Flash drive or the CD-ROM source files, the PC will be safely shut down allowing you to make the necessary adjustments.
3. If all required conditions are met, the utility will allow you to enter the Main Options Menu where you can choose the type of configuration suitable for your application.
4. Select a configuration option (Options 1 or 2) and follow the on-screen directions. The USB Flash drive can be configured as a bootable superfloppy or as a fixed disk with a bootable partition. In most cases both options will work fine, but if for some reason one fails to boot with your motherboard, try

the other. Some motherboards are just less tolerant than others.

5. If the configuration process is successful and all configuration tasks finish with a status of [ DONE ], then the USB Flash drive has been programmed successfully. Exit the utility and power the PC down.
6. Remove the USB Flash drive from the USB port. It is now ready for use

Although most modern motherboards are equipped with BIOS support for booting via USB, there are cases where that may not be possible. The NASLite-2 USB distribution CD-ROM furnishes a Kicker floppy disk utility that is designed to boot NASLite-2 USB on computers that are not capable of booting from USB at all. In fact, the Kicker floppy disk can be used to boot NASLite-2 USB on very old computers equipped with an USB add-on card.

Making a bootable Kicker floppy disk is simple. Required are a Windows PC as well as a blank formatted 3.5 inch high density floppy disk. Run the provided executable and follow the on-screen instructions to complete the process.

NASLite-2 USB can also be installed on Compact Flash and used with a suitable IDE-to-CF adapter. The installation process is the same as outlined above provided a suitable USB-to-CF adapter is used. To boot, move the newly programmed Compact Flash, from the USB-to-CF adapter to the IDE-to-CF adapter and set the appropriate boot order in the BIOS.

Once installation is complete, the computer is ready to boot NASLite-2 USB. Insert the programmed USB Flash drive into place. Turn on the computer and make sure the BIOS is set to boot from USB as appropriate. After the boot sequence is complete, the initial login screen will be displayed.

## Initial NASLite-2 Configuration

After NASLite-2 setup is completed, the new server must be configured for use. Initial configuration is summarized as follows:

1. Initial Login to NASLite-2
2. Provide License ID
3. Configure Network Settings
4. Change Administration Password

5. Save Configuration Settings
6. Reboot to Apply Configuration
7. Unlock NASLite-2
8. Configure storage disks
9. Save Configuration Settings
10. Reboot to unlock and mount storage disks

Detailed explanation of each configuration step follows:

**Step 1 - Initial Login to NASLite-2** - At this stage of the configuration, NASLite-2 is in Default Administration Mode. Synonymous to Factory Settings, Default Administration Mode is intended primarily to allow the administrator to configure the NASLite-2 network settings, supply a valid License ID and change the default administration password. During Default Administration Mode, services are not started and fixed disk drives are not checked or mounted.

The administrative login name is always **admin** (in lower case letters). During Default Administration Mode, the admin password is always **nas** (also in lower case letters). When you have successfully logged in, the NASLite-2 Administration Utility Main Options Menu will be displayed. Detailed description of the NASLite-2 Administration Utility menus and options is provided in the Administration Utility section. All configuration settings are done using this menu.

```
NASLite-2 USB Network Attached Storage Server Operating System v2.0b 05a2006
Checking resources !=> ..... [ DONE ]
Detecting configuration device ( Disk-1 ) ..... [ DONE ]
Retrieving configuration settings ..... [ FAIL ]
Verifying license ID ( ) ..... [ FAIL ]
Setting default administration mode ( admin / nas ) ( * ) ..... [ DONE ]
NASLite-2 login: _
```

**Typical Console Login Screen  
Default Administration Mode**

**Step 2 - Supply License ID** – NASLite-2 requires a valid License ID in order to enable NAS functionality. A typical License ID consists of 5 sets of 5 alphanumeric characters and should be unique for each running copy of NASLite-2. A unique license ID is supplied with each copy of NASLite-2 at the time of purchase. You can enter a valid License ID by using License (Option L) of the Administration Utility Main Options Menu.

**Step 3 - Configure Network Settings** – Basic NASLite-2 network configuration consists of setting the IP Address, Server Name and Workgroup Name. That can be achieved in the Network Configuration Menu (Option 1). Make sure that the IP address is unique and is in the same subnet as the rest of the local workgroup computers. The server name is what you will see when you browse the workgroup or network from your computer and should also be unique. When all network settings are entered and satisfactory, return to the Main Options Menu (Option R).

**NOTE:** *Setting a valid default gateway may make the server contents world-visible. Take particular care with your network setup especially if a broadband Internet connection is available via the same gateway.*

**Step 4 - Change Administration Password** – It is recommended that the default NASLite-2 password be changed to something more effective than the Default Administration Mode password. Change the admin password (Option 5) at this time.

**Step 5 - Save Configuration Settings** - The network settings, licensing info as well as the administration password are stored on the NASLite-2 configuration media, so when you have set the new network settings, licensing information and the administration password, the new settings must be saved (Option 9).

**NOTE:** *Once the configuration settings are saved, the NASLite-2 CDD configuration floppy disk must remain in the floppy disk drive. It is also a good idea to write-protect the configuration floppy disk in order to prevent inadvertent configuration changes.*

**Step 6 - Reboot to Apply Configuration** - To apply the new configuration settings the NASLite-2 server must be rebooted (Option 7). At this stage, booting NASLite-2 with the new configuration settings will launch only TELNET and HTTP services.

Now it is good to ensure that the network interface was detected and properly initialized. The **Detecting Network Device** line should indicate the current status. If the network device is initialized and ready, the READY audible prompt will be generated (see NASLite-2 as an Appliance).

If NASLite-2 fails to detect and initialize the network interface, NASLite-2 generates the CHECK NETWORK audible prompt. In this case, the network interface may be damaged or not supported. A compatible, working network interface must be installed.

**NOTE:** *Previously configured storage drives or storage drives configured with other versions of NASLite will be mounted and exported accordingly at this time.*



```
NASLite-2 USB Network Attached Storage Server Operating System v2.0b 05a2006
Checking resources !=> ..... [ DONE ]
Detecting configuration device ( Disk-1 ) ..... [ DONE ]
Retrieving configuration settings ..... [ DONE ]
Verifying license ID ( ..... ) ..... [ DONE ]
Detecting network device ( eth0 set to 192.168.1.251 ) ..... [ DONE ]
Generating System ID ( SE-6B4B0D3255BFEF95601890A ) ..... [ DONE ]
Verifying Unlock Code ( 00000 ) ..... [ FAIL ]
Checking storage filesystem ( Disk-0 ) ..... [ FAIL ]
Checking storage filesystem ( Disk-1 ) ( Boot/Config Device ) ..... [ PASS ]
Setting normal administration mode ..... [ DONE ]

NASLite-2 login: _
```

**Typical Console Login Screen  
Normal Administration Mode - Locked**

**Step 7 - Unlock NASLite-2** – Currently, NASLite-2 is locked with only TELNET and HTTP available for access via the network. Use another networked computer with a web browser to access the NASLite-2 Status pages via HTTP.

Once you have access to the Status pages, navigate to the Unlock page. Here you'll be presented with directions and basic facilities that will allow you to easily retrieve an appropriate unlock code for your NASLite-2 server. You must have internet access for that to take place.

PARAMETER	VALUE
PRODUCT	NASLite-2 USB
LICENSE ID	
SYSTEM ID	SE-6B4B0D3255BFEF95601890A
 <b>NOTE:</b> Click on this link button to submit the above information and request an Unlock Code from Server Elements.	

**NASLite-2 Unlock Screen Detail**

A typical unlock code consists of 5 alphanumeric characters and is unique to your particular NASLite-2 installation.

Once you have the unlock code, continue by returning to the Administration Utility. Use Unlock (Option U) to enter the unlock code.

The unlock code is network hardware-specific and will not work on other installations. Adding or removing storage disks will not affect unlock code requirements.

**Step 8 - Configure Storage Disks** – NASLite-2 fixed disk drives need to be set up next (Option 3). The Storage Configuration Menu screen will list all available storage disks and the associated interface details. It is important to note that SATA, SCSI, USB, FireWire and RAID attached storage drives will all appear as SCSI disks.

From the Storage Configuration Menu, select the storage disk you wish to configure. That will display the associated Disk-N Configuration Menu. Use Format Disk-N (Option 8) to partition and format the disk. Allow a few minutes for larger drives to complete the initialization process.

**NOTE:** *During storage disk configuration, all data currently on the fixed disk will be lost. If you wish to preserve the data, make sure it's properly backed up before configuring the fixed disk for use as NASLite-2 storage.*

With format complete, at the Disk-N Configuration Menu, select the appropriate settings for Export Disk-N (Option 1), Set Disk-N Capacity Alarm (Option 2) and Set Disk-N S.M.A.R.T. (Option 3) options. Refer to the Administration Utility section for complete details on all options.

When all Disk-N configuration settings are complete and satisfactory, return to the Storage Configuration Menu (Option R). Repeat Disk-N configuration for each available disk as necessary.

**Step 9 - Save Configuration Settings** - The new configuration settings, containing the unlock code must be stored on the NASLite-2 configuration media, so when you have completed the configuration the new settings must once again be saved (Option 9).

**Step 10 – Reboot to unlock and mount storage disks** - To finalize the NASLite-2 configuration, mount all newly configured storage disks and launch all NAS services, a final reboot is necessary. Reboot the NASLite-2 server (Option 7). Assuming all configuration settings are correct, the NASLite-2 server should now be online and ready for use.

```
NASLite-2 USB Network Attached Storage Server Operating System v2.0b 05a2006
Checking resources !=> ..... [ DONE ]
Detecting configuration device ( Disk-1 ) ..... [ DONE ]
Retrieving configuration settings ..... [ DONE ]
Verifying license ID ( ..... ) ..... [ DONE ]
Detecting network device ( eth0 set to 192.168.1.251 ) ..... [ DONE ]
Generating System ID ( SE-6B4B0D3255BFEF95601890A ) ..... [ DONE ]
Verifying Unlock Code ( E15C8 ) ..... [ DONE ]
Checking storage filesystem ( Disk-0 ) ( Clean ) ..... [ DONE ]
Checking storage filesystem ( Disk-1 ) ( Boot/Config Device ) ..... [ PASS ]
Mounting storage ( Disk-0 ) ..... [ DONE ]
Starting servers ( TELNET HTTP RSYNC FTP SMB/CIFS NFS ) ..... [ DONE ]
Mounting remote storage ( Mounted-4 ) ..... [ DONE ]
Setting normal administration mode ..... [ DONE ]
NASLite-2 login: _
```

**Typical Console Login Screen  
Normal Administration Mode - Unlocked**

## Remote Administration

NASLite-2 can be administered remotely via TELNET. All administration options available via the console are also available remotely via TELNET. To confirm remote access, it is a good idea to log in to the NASLite-2 server using TELNET from any computer on your network at this point. For example, to login via TELNET from Windows, follow these steps:

1. Click Start, then click Run.
2. Open a TELNET session by Typing telnet and a space and then type the IP address of the NASLite-2 server. For example: `telnet 192.168.1.251`, then click OK
3. You should get the NASLite-2 login prompt. Login and you should see the NASLite-2 Administration Utility Options Menu.
4. Log out (Option E).
5. Your TELNET window will close.

**NOTE:** While in Default Administration Mode, the NASLite-2 Administration Utility will not be accessible remotely via TELNET.

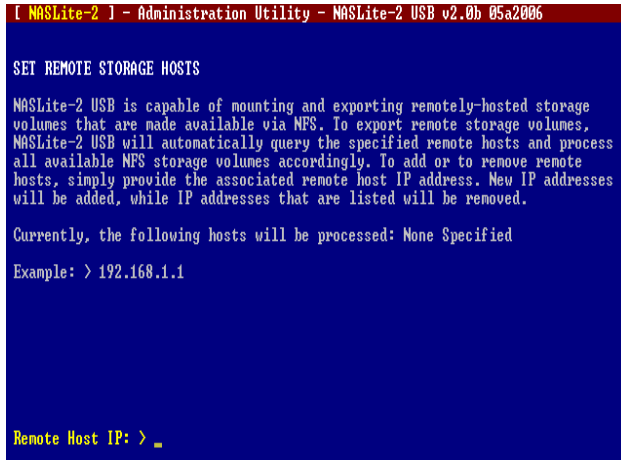
## Remotely-Hosted Storage

NASLite-2 incorporates the ability to export remotely hosted volumes made available to the network via NFS. In other words, if there are additional NASLite servers visible to NASLite-2, it is possible to share all of their storage disks as if all of those disks were physically mounted on the NASLite-2 computer. That functionality can be very useful in many different scenarios.

To illustrate how remotely-hosted storage can be utilized, it can be assumed that two NASLite-2 servers are available on a 192.168.1.0 network. The server addresses are 192.168.1.250 and 192.168.1.251 where the latter will be sharing all available storage. Begin by ensuring that both servers are properly configured, fully operational and available for access. The steps are as follows:

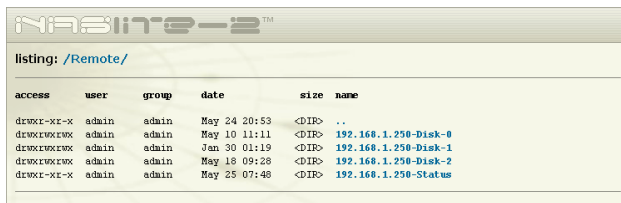
1. Access the Administration Utility of the master server. In this scenario, the master server's address is 192.168.1.251.
2. Once logged in, at the Main Options Menu access the Storage Configuration Menu (Option 3).
3. At the Storage Configuration Menu, access the General Storage Options Menu (Option G).
4. At the General Storage Options Menu, select Set Remote Storage Hosts (Option 4).

- At the Remote Hosts prompt, enter the IP address of the remote host and press ENTER. In this scenario the remote host IP address is 192.168.1.250.



**NASLite-2 Administration Utility  
Set Remote Storage Hosts Screen**

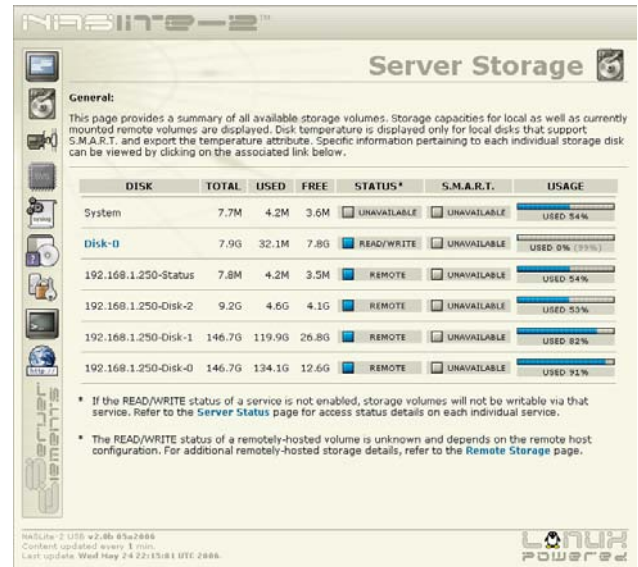
- Return to the Storage Configuration Menu (Option R) and then to the Main Options Menu (Option R).
- Select Save Configuration (Option 9) to save the new settings. Ensure the remote host is on and available, and reboot the master server (Option 7).



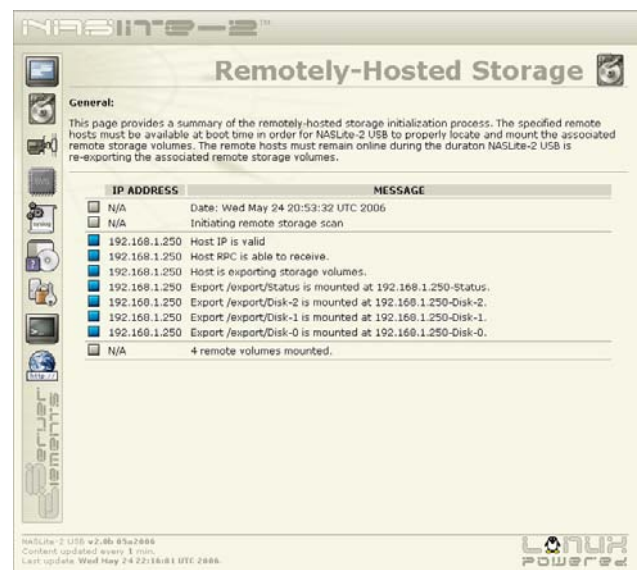
**Typical Remote Share Content**

If everything is properly configured, once the master server reboots, all NFS exported storage on the remote host is now available on the master server. The total number of available remotely-hosted storage volumes is shown on the Mounting Remote Storage

line on the console login screen. The naming convention for remotely-hosted storage volumes is **X.X.X.X-DISK**, where **X.X.X.X** is the IP address of the remote host and **DISK** is the name of the associated storage disk.



**NASLite-2 Status Page  
Typical Server Storage Showing  
Remotely-Hosted Storage Volumes**



**NASLite-2 Status Page  
Typical Remotely-Hosted Storage**



Remotely-hosted storage volumes are not shared individually as are local storage disks but are made available via the **Remote** share. The Remote share will contain all remotely-hosted volumes from one or more remote hosts.

Detailed information about the remotely-hosted storage volumes is available via the Server Storage status page. Information about the physical hardware as well as associated access rights are not available and are not shown.

Additional information pertaining to the remote hosts is available via the Remotely-Hosted Storage status page. The Remotely-Hosted Storage status page can be used to troubleshoot most common remotely-hosted storage initialization problems.

## NASLite-2 Security

The storage made available by NASLite-2 can be set as Read/Write or as Read-Only. The same is also true for the individual export services. Other than that, storage is not restricted in any way. As a community file server, any user capable of accessing the NASLite-2 server via SMB/CIFS, NFS, FTP RSYNC or HTTP can read and write openly. Only the NASLite-2 Administration Utility is password protected in order to restrict unauthorized access to the Options Menu.







## Using The SMB/CIFS Server

NASLite-2 exports all available storage disks to the local network via SMB/CIFS (Server Message Block)/ (Common Internet File System), commonly known as Microsoft Windows Networking. NASLite-2 will export all installed and configured fixed disk drives available on the server computer as **Disk-0** through **Disk-N** in consecutive order where N will be based on the total number of installed disks. These names are fixed and cannot be changed. All **Disk-N** folders are accessible by all users. NASLite-2 also exports three additional shares as follows:

1. **Shares** – Exports all available storage volumes via a single share.
2. **Remote** – Exports all remotely hosted storage volumes.

3. **Status** – Exports NASLite-2 status information pages.

NASLite-2 will appear as a member of the local workgroup when the Network Neighborhood is browsed. Accessing the NASLite-2 storage drives is exactly the same as accessing remote windows shares. In addition to Windows, NASLite-2 SMB/CIFS shares can be accessed by most operating systems including OS X and Linux.

Name ▲	Comments
 Disk-0	Share Disk-0 (Read/Write)
 Disk-1	Share Disk-1 (Read/Write)
 Disk-2	Share Disk-2 (Read/Write)
 Remote	Share Remote (Read/Write)
 Shares	All Shares (Read/Write)
 Status	Share Status (Read/Write)

Typical NASLite-2 Workgroup Shares

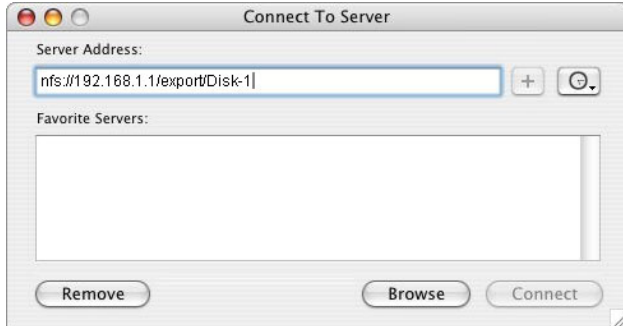
## Using The NFS Server.

NASLite-2 exports all storage disks to the local network via NFS (Network File System). NASLite-2 will name all installed and configured fixed disk drives available on the server computer as **/export/Disk-0** through **/export/Disk-N** in consecutive order where N will be based on the total number of installed disks. These names are fixed and cannot be changed. All **Disk-N** folders are accessible by all users. The **/export/Status** export is made available by default, and is read-only.

To connect to a NASLite-2 export via UNIX, the **mount** command can be used. Connections from OS X or KDE however are more convenient using the available GUI facilities. All that is required is the appropriate server export address as illustrated in the OS X example shown below:

Most UNIX operating systems should readily support mounting of remote NFS exports. **Windows Services for UNIX** is required for Windows NT/2K/XP to mount NASLite-2 NFS exports.

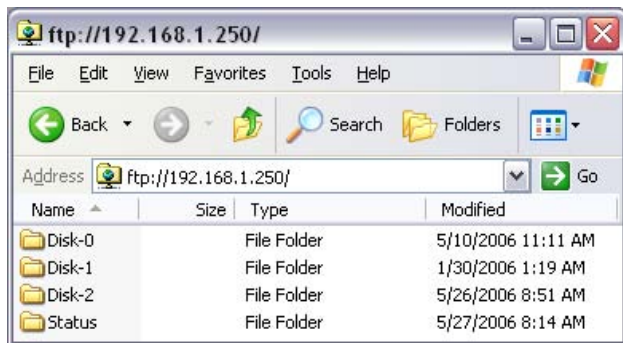
To determine which drives are available and exported by NASLite-2, one can examine the information available on the Status pages.



Connecting to NASLite-2 via OS X

## Using The FTP Server

NASLite-2 exports all storage disks to the local network via FTP (File Transfer Protocol). NASLite-2 will name all installed and configured fixed disk drives available on the server computer as **Disk-0** through **Disk-N** in consecutive order where N will be based on the total number of installed disks. These names are fixed and cannot be changed. All **Disk-N** folders are accessible by all users. NASLite-2 also exports three additional folders as follows:



Typical NASLite-2 FTP Shared Folders

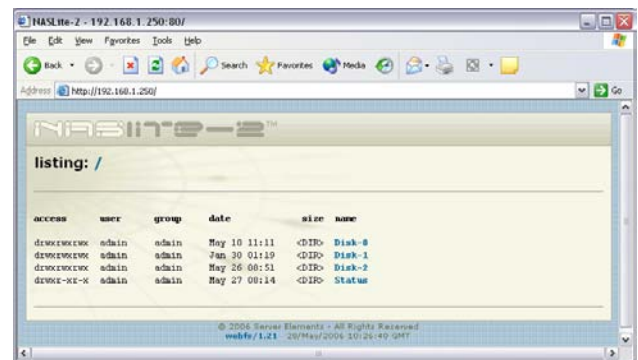
1. **Shares** – Exports all available storage volumes via a single share.

2. **Remote** – Exports all remotely hosted storage volumes.
3. **Status** – Exports NASLite-2 status information pages.

You will be able to connect to the NASLite-2 server via any FTP client. For example if your NASLite-2 server IP address is set to 192.168.1.251, entering `ftp://192.168.1.251` in the Windows Explorer's address bar will access the server contents. Here files and folders may be dragged-and-dropped to and from the NASLite-2 server window.

## Using The HTTP Server

The NASLite-2 storage contents can be accessed using any web browser via HTTP (Hypertext Transfer Protocol). For example assuming that your NASLite-2 server IP address is 192.168.1.251. Entering `http://192.168.1.251` in the browser's address bar can then access the server content inside the browser window. All NASLite-2 storage contents are made available via HTTP as read only regardless of the storage drive access setting.



Typical NASLite-2 HTTP Content

The NASLite-2 HTTP server supports a complete set of mime types, making it the perfect solution for serving music files, digital images, scanned forms and documents, HTML files, PDF documents, movie files or any other content suitable for read-only intranet web distribution.

## Using The RSYNC Server

The NASLite-2 storage contents can be accessed via an rsync client for low-bandwidth file transfers. Best suited for syncing folder content, rsync can be very effective as an integrated backup solution. Rsync is available for a wide range of posix-compliant platforms as well as Windows variants with the aide of cygwin. Refer to the rsync website (<http://rsync.samba.org/>) for complete details on this powerful incremental file transfer utility.

## Content Backup Mirroring

NASLite-2 storage disks can be set to act as mirror copies of other storage disks for the purpose of content replication or backup. Both local and remote disks can be mirrored. Mirrors can be set to sync once per day at any given hour. In order to designate a storage disk as a mirror, NASLite-2 requires three parameters as follows:

1. Remote IP address (example: 192.168.1.3).
2. Source disk name (example: Disk-2).
3. Mirror sync hour (example: 04)

```
[ NASLite-2 ] - Administration Utility - NASLite-2 USB v2.03 11-2006

MIRROR TO DISK-0

Disk-0 can be set as a daily mirror of a local or remote storage disk.
Mirroring accepts a maximum of three parameters as follows:

1. Optional remote NASLite-2 server IP address (Example: 192.168.1.1).
2. Mandatory NASLite-2 source disk (Example: Disk-1).
3. Optional mirror time UTC (Example: 21).

Parameters must be separated by a slash (Example: 192.168.1.1/Disk-1/21).
Refer to the Installation and Administration Guide for details.

Mirror parameter settings:

Remote: [ 192.168.100.5 ]
Source: [ Disk-0 ]
Mirror: [ 05 ]

Mirror: > _
```

**NASLite-2 Administration Utility  
Typical Mirror to Disk-N Screen**

The three necessary parameters are input on a single line and are separated with a slash (example: 192.168.1.3/Disk-2/04). If the mirror source is local, then the remote server IP address is omitted and a

leading slash is used (example: /Disk-2/04). If the hour parameter is omitted, then 00 is assumed and the mirror will sync at the beginning of each new day.

The NASLite-2 rsync service must always be enabled on a remote source. However it is not required for local mirroring or on a server hosting the destination mirror disk.

Mirroring parameters are saved in a file named MIRROR at the root of the mirror drive. That file can be manipulated only via the NASLite-2 Administration Utility and cannot be deleted or tampered with manually. Seeing that file at the root of a storage drive is an indication that the disk is a mirror and that the content is a copy.



**NASLite-2 Status Page  
Typical Server Storage Disk Page  
Showing Mirror Details**

Mirroring is performed with the aide of rsync, so the process is both CPU and memory intensive. During syncing, data about the source and/or the destination files are stored in memory. A good average to observe is 100 bytes per file, so the process of mirroring 800,000 files will consume approximately 80 megabytes or RAM. When setting multiple mirrors on a given NASLite-2 server, it is important to stagger the sync times in order to avoid unnecessary CPU load or insufficient memory problems.



The NASLite-2 disk backup mirroring can be very useful when properly implemented. It can be utilized within a VPN for cross-office filesystem replication, daily disk-to-disk local snapshot backups or to mirror between two redundant NASLite-2 servers. External USB or FireWire disks are perfectly suited for use as mirrors and can be very flexible for that purpose.

## NASLite-2 as an Appliance

NASLite-2 is well suited for operation as a network appliance, remotely administered and without an attached monitor and keyboard. Remote administration can be performed from any computer on the same network via TELNET.

To compensate for the lack of visible indicators on the physical server, NASLite-2+ employs a number of audible prompts that indicate states and or conditions. The audible prompts are generated via the PC speaker, so no additional sound hardware is necessary.

AUDIBLE PROMPT	STATE
2 x 300Hz 1 x 700Hz	<b>READY</b> - Server is online and ready for use.
2 x 700Hz 1 x 300Hz	<b>SHUTDOWN</b> - Power may be shut down manually in 5 seconds.
5 x 200Hz	<b>CHECK NETWORK</b> - Unable to detect or initialize network interface card.
3 x 700Hz 3 x 300Hz	<b>CHECK DISK</b> - Fixed disk drive fails overall SMART self-assessment.
3 x 700Hz	<b>CHECK DISK CAPACITY</b> - Fixed disk drive usage at or above capacity alarm monitor.
5 x 700Hz	<b>DEFAULT ADMINISTRATION MODE</b> – Server started without a configuration floppy disk.

### NASLite-2 Audible Prompts

**NOTE:** In reference to the **NASLite-2 Audible Prompts table**, the information provided in the **AUDIBLE PROMPT** column represents the number of beeps and their pitch. For example, when the NASLite-2 server is ready for use, it will generate a

*READY prompt by sounding two 300Hz beeps followed by a single 700Hz beep.*

## Disk Health and Monitoring

When the NASLite-2 server boots, each fixed disk drive filesystem is identified and checked. If a filesystem is identified and maintenance is scheduled, NASLite-2 automatically analyzes and attempts to fix any existing filesystem problems before storage is made available for use.

**NOTE:** When a fixed disk drive filesystem is being checked, NASLite-2 storage will not be available for use. The pending check may take anywhere from 1 to 20 or more minutes depending on the fixed disk drive size and contents. A pending check can be identified by observing the associated fixed disk drive activity LED shortly after booting NASLite-2. The associated fixed disk drive activity LED will be continuously on for the duration of the check. Current initialization status can also be observed by examining the console screen if an attached monitor is present.

NASLite-2 also monitors the health of the storage fixed disk drives using Self-Monitoring, Analysis and Reporting Technology (S.M.A.R.T.) built into most modern fixed disk drives. In many cases, NASLite-2 will provide advanced warning of fixed disk drive degradation and failure. The S.M.A.R.T. status of the configured storage fixed disk drives may be checked every time the status pages are updated. The fixed disk drives S.M.A.R.T. status can be viewed using the NASLite-2 Status pages made available through the **Status** share.

In the event of approaching failure, if S.M.A.R.T. support is available, NASLite-2 will begin generating a 5-beep audible CHECK DISK alarm every time the status pages are updated. At that time it is best to take the necessary precautions to remove important data from the affected disk.

## Administration Utility

The NASLite-2 Administration Utility is a console-based menu-driven utility that can be accessed at the server computer via a locally connected monitor and keyboard, or remotely through TELNET. The NASLite-2 Administration Utility presents all available configuration options via an easy to use

multi-level menu structure. Available option menus and associated configuration options are covered in detail below.

## Main Options Menu

The Main Options Menu is the first level configuration menu displayed by the NASLite-2 Administration Utility. All secondary menus and options can be accessed from this location. The Main Options Menu provides access to the following:

- **Network Configuration** (Option 1) - Provides access to the Network Configuration Menu covered in detail below.
- **Services Configuration** (Option 2) - Provides access to the Services Configuration Options Menu covered in detail below.

```
[ NASLite-2 ] - Administration Utility - NASLite-2 USB v2.0b 05a2006

MAIN OPTIONS MENU

1 - Network Configuration
2 - Services Configuration
3 - Storage Configuration
* - Reserved
5 - Set Administrative Password
6 - Set System Date and Time
7 - Reboot
8 - Shutdown
9 - Save Configuration

A - About NASLite-2 USB
L - License - ( ##### )
U - Unlock - ( 57E3D )
T - Tools and Utilities
E - Exit

Select: >
```

### NASLite-2 Administration Utility Main Options Menu

- **Storage Configuration** (Option 3) - Provides access to the Storage Configuration Options Menu covered in detail below.
- **Set Administrative Password** (Option 5) - Changes the **admin** user password. During Default Administration Mode, the admin user password is always **nas**.

- **Set System Date and Time** (Option 6) - Sets the NASLite-2 computer date and time. Provided values must be in GMT time.
- **Reboot** (Option 7) - Reboots the NASLite-2 server.
- **Shutdown** (Option 8) - Shuts down the NASLite-2 server.
- **Save Configuration** (Option 9) - Saves NASLite-2 configuration settings to the associated configuration media.
- **About** (Option A) - Displays a basic description of NASLite-2.
- **License** (Option L) - Sets a valid License ID.
- **Unlock** (Option U) - Sets a valid system unlock code.
- **Tools and Utilities** (Option T) - Provides access to the Tools and Utilities Menu covered in detail below.
- **Exit** (Option E) - Exits the NASLite-2 Administration Utility and returns to the login prompt.

**NOTE:** While in Default Administration Mode, the NASLite-2 Administration Utility will not be accessible remotely via TELNET.

## Network Configuration Menu

The Network Configuration Menu allows access to all NASLite-2 network configuration options. Each configuration option screen provides sufficient instructional assistance and feedback to help ensure a properly configured server. The Network Configuration Menu provides access to the following:

- **Change IP Address** (Option 1) - Sets the NASLite-2 network IP address. Calculates and sets the appropriate netmask and broadcast based on the supplied network IP address.
- **Change Netmask** (Option 2) - Sets the NASLite-2 netmask. Calculates and sets the

appropriate broadcast value based on the supplied network IP address and netmask.

- **Change Gateway** (Option 3) – Sets the default network gateway IP address.

**NOTE:** *Setting a valid default gateway may make the server contents world visible. Take particular care with your network setup especially if a broadband Internet connection is available via the same gateway.*

- **Change Name** (Option 4) – Sets the NASLite-2 name. This value is especially important if NASLite-2 is a part of a Microsoft network workgroup. The supplied name should be unique on the associated network.

```
[ NASLite-2 ] - Administration Utility - NASLite-2 USB v2.0b 05a2006

NETWORK CONFIGURATION MENU

The options in this menu determine which network NASLite-2 USB will be a part
of, and how it will appear to clients on the associated network. For security
reasons, it is recommended that NASLite-2 USB is placed on a non-routable
network such as 10.X.X.X or 192.168.X.X.

1 - Change IP Address [ 192.168.1.1 ]
2 - Change Netmask   [ 255.255.255.0 ]
3 - Change Gateway   [ 192.168.1.1 ]

4 - Change Name      [ NASLite-2 ]
5 - Change Comment   [ My NASLite-2 Server ]
6 - Change Workgroup [ WORKGROUP ]

R - Return To Main Option Menu

Select: >
```

### NASLite-2 Administration Utility Network Configuration Menu

- **Change Comment** (Option 5) – Sets a generic short comment that is used by select export services for share and export identification.
- **Change Workgroup** (Option 6) – Sets the NASLite-2 workgroup. This value is especially important if NASLite-2 is a part of a Microsoft network workgroup. The supplied name should match the associated network workgroup.

- **Return To Main Option Menu** (Option R) – Exits the Network Configuration Menu and returns to the Main Options Menu.

## Service Configuration Menu

The Service Configuration Menu provides the means to make pertinent adjustments to all NASLite-2 services. All available options are designed to behave as rotating selectors, meaning that selecting the option will simply change its status to the next available state. For example selecting Option 1 will change the state of the TELNET service from [ON] to [--](disabled) and back again. The Service Configuration Menu provides the following options:

```
[ NASLite-2 ] - Administration Utility - NASLite-2 USB v2.0b 05a2006

SERVICE CONFIGURATION MENU

Service configuration ...

1 - TELNET [ ON ] (ON, --)
2 - HTTP [ ON ] (ON, --)
3 - RSYNC [ RO ] (RW, RO, --)
4 - FTP [ RW ] (RW, RO, --)
5 - SMB/CIFS [ RW ] (RW, RO, --)
6 - NFS [ RW ] (RW, RO, --)
7 - Status Update [ 01 ] (01, 05, 10, 15, 30, 45, 1h, 4h, 8h, --)

R - Return To Main Option Menu

Select: > _
```

### NASLite-2 Administration Utility Service Configuration Menu

- **TELNET** (Option 1) – Sets the TELNET service as ON or disabled. If the TELNET service is set to disabled, remote access to the Administration Utility will be disabled.
- **HTTP** (Option 2) – Sets the HTTP service as ON or disabled.
- **RSYNC** (Option 3) – Sets the RSYNC service as Read-Only, Read/Write or disabled.
- **FTP** (Option 4) – Sets the FTP service as Read-Only, Read/Write or disabled.

- **SMB/CIFS** (Option 5) – Sets the SMB/ CIFS service as Read-Only, Read/Write or disabled.
- **NFS** (Option 6) – Sets the NFS service as Read-Only, Read/Write or disabled.
- **Status Update** (Option 7) – Sets the Status Pages update time interval. An interval of 1, 5, 10, 15, 30, and 45 minutes as well as 1, 4 and 8 hours can be set.
- **Return To Main Option Menu** (Option R) – Exits the Service Configuration Menu and returns to the Main Options Menu.

- **Return To Main Option Menu** (Option R) – Exits the Storage Configuration Menu and returns to the Main Options Menu.

## Storage Configuration Menu

The Storage Configuration Menu provides the means to configure and maintain all NASLite-2 storage. The Storage Configuration Menu provides access to the following:

```
[ NASLite-2 ] - Administration Utility - NASLite-2 USB v2.0b 05a2006

STORAGE CONFIGURATION MENU

0 - Disk-0, IDE-0-0-0-0
1 - Disk-1, IDE-0-1-0-0
2 - Disk-2, SCSI-0-0-0-0
* - Disk-3, SCSI-1-0-0-0

G - General Storage Option Menu
R - Return To Main Option Menu

Select: > _
```

### NASLite-2 Administration Utility Storage Configuration Menu

- **Disk-N** (Options 0 through N) - Provides access to the Disk-N Configuration Menu covered in detail below.
- **General Storage Options** (Option G) - Provides access to the General Storage Options Menu covered in detail below

## Disk-N Configuration Menu

The Disk-N Configuration Menu provides all necessary options required for individual storage disk configuration and maintenance. Hardware-specific information as well as disk usage are displayed for proper device identification. The Disk-N Configuration Menu provides the following options:

```
[ NASLite-2 ] - Administration Utility - NASLite-2 USB v2.03 11-2006

DISK-0 CONFIGURATION MENU

Disk Model: SAMSUNG SP1604N, SN# S013J10Y324324, v.TM100-30
Interface: IDE, HOST-0, BUS-0, TARGET-0, LUN-0
Status: DISK IS MOUNTED!
Usage: 146.7G / 55.3G / 91.4G / 38% - ( Size / Used / Free / Used% )

1 - Export Disk-0 [ RW ] (RW, RO, --)
2 - Set Disk-0 Capacity Alarm [ 95 ] (75, 80, 85, 90, 95, 99, --)
3 - Set Disk-0 S.M.A.R.T. [ ON ] (ON, --)
4 - Run Disk-0 Extended S.M.A.R.T. Self-Test
5 - Check Disk-0 Filesystem
* - Check and Repair Disk-0 Filesystem
7 - Apply Journal to Disk-0 Filesystem
8 - Format Disk-0
9 - Mirror to Disk-0 [ NONE ]

R - Return To Storage Configuration Menu

Select: >
```

### NASLite-2 Administration Utility Disk-N Configuration Menu

- **Export Disk-N** (Option 1) - Sets the Disk-N export as Read/Write, Read-Only or parked (Idle).
- **Set Disk-N Capacity Alarm** (Option 2) – Sets Disk-N capacity alarm. If Disk-N capacity exceeds the capacity alarm setting, NASLite-2 will sound the CHECK DISK CAPACITY audible prompt on Status update. Capacity alarm values of 75, 80, 85, 90, 95 and 99 percent can be set. The capacity alarm can also be disabled.
- **Set Disk-N S.M.A.R.T.** (Option 3) – Sets Disk-N periodic S.M.A.R.T. status check. If Disk-N S.M.A.R.T. status fails, NASLite-2 will sound the CHECK DISK audible prompt

on Status update.

- **Run Disk-N Extended S.M.A.R.T. Self-Test** (Option 4) – Executes Disk-N extended S.M.A.R.T. self-test.
- **Check Disk-N Filesystem** (Option 5) – Executes a read-only Disk-N filesystem check. This is a diagnostic only test and will not modify disk contents in any way.
- **Check and Repair Disk-N Filesystem** (Option 6) – Executes a complete Disk-N filesystem check and repair. Disk will be temporarily unmounted. This option will detect and repairs filesystem anomalies.
- **Apply Journal to Disk-N Filesystem** (Option 7) – Applies a filesystem journal to an existing filesystem, effectively converting ext2 filesystems to ext3. It is generally a good idea to use a journal with every NASLite-2 storage disk filesystem.
- **Format Disk-N** (Option 8) – Formats Disk-N. In order to prevent data loss, Only unformatted or parked (See Export Disk-N) disks can be formatted. Formatting will be denied on disks that are currently mounted and exported by NASLite-2.
- **Mirror to Disk-N** (Option 9) – Sets Disk-N to act as a daily backup mirror of a local or remotely hosted storage disk. For complete details refer to the Content Backup Mirroring section.
- **Return To Storage Configuration Menu** (Option R) – Exits the Disk-N Configuration Menu and returns to the Storage Configuration Menu.

- **Set Disk-N Capacity Alarm** (Option 2) – Sets default disk capacity alarm. The Disk-N specific setting of the same name overwrites this setting.
- **Set Disk-N S.M.A.R.T.** (Option 3) – Sets default periodic S.M.A.R.T. status check. The Disk-N specific setting of the same name overwrites this setting.
- **Set Remote Storage Hosts** (Option 4) – Provides access to the Set Remote Storage Hosts configuration screen. Refer to the Remotely-Hosted Storage section for details.
- **Return To Storage Configuration Menu** (Option R) – Exits the General Storage Options Menu and returns to the Storage Configuration Menu.

```
[ NASLite-2 ] - Administration Utility - NASLite-2 USB v2.0b 05a2006
GENERAL STORAGE OPTION MENU

1 - Export Disks Default      [ RW ] <RW, RO, -->
2 - Set Default Capacity Alarm [ 95 ] <75, 80, 85, 90, 95, 99, -->
3 - Set Disks S.M.A.R.T.     [ ON ] <ON, -->

4 - Set Remote Storage Hosts

R - Return To Storage Configuration Menu

Select: > _
```

**NASLite-2 Administration Utility  
General Storage Options Menu**

## General Storage Options Menu

The General Storage Options Menu provides access to general NASLite-2 storage configuration options. Available are the following options:

- **Export Disk-N** (Option 1) - Sets the default disk export as Read/Write, Read-Only or parked. The Disk-N specific setting of the same name overwrites this setting.

## Tools and Utilities Menu

The Tools and Utilities menu provides a number of useful diagnostic and monitoring tools that can be invaluable for server maintenance and troubleshooting. The Tools and Utilities Menu provides the following options:

- **Network Status** (Option 1) - Displays a general summary of network interface usage

since last reboot.

- **Network Status (Weekly)** (Option 2) - Displays a weekly summary of network interface usage since last reboot.
- **Network Status (Monthly)** (Option 3) - Displays a monthly summary of network interface usage since last reboot.
- **Network Status (Top 10 Days)** (Option 4) - Displays a summary of the top 10 days of network interface usage since last reboot.

```
[ NASLite-2 ] - Administration Utility - NASLite-2 USB v2.0b 05a2006
TOOLS AND UTILITIES MENU
1 - Network Status
2 - Network Status ( Weekly )
3 - Network Status ( Monthly )
4 - Network Status ( Top 10 Days )
5 - Sample Current Network Traffic
6 - Show Kernel Route Table
7 - Ping Remote Computer
8 - Show Remote NFS Exports
9 - Show Network Configuration

D - Reset Configuration to Factory Defaults
R - Return To Main Menu

Select: >
```

### NASLite-2 Administration Utility Tools and Utilities Menu

- **Sample Current Network Traffic** (Option 5) - Samples the network interface traffic for 5 seconds and displays the results.
- **Show Kernel Route Table** (Option 6) - Displays the current kernel route table.
- **Ping Remote Computer** (Option 7) - Pings a remote IP address and displays the results.
- **Show Remote NFS Exports** (Option 8) - Queries a remote IP address for available NFS exports and displays the results.
- **Show Network Configuration** (Option 9) - Displays hardware details and configuration

settings of the current network interface.

- **Reset Configuration to Factory Defaults** (Option D) - Resets configuration to defaults. This option has the same general effect as booting NASLite-2 for the first time where all unique configuration parameters are reset including License ID and Unlock Code. Disk-specific options are saved on the associated storage disks and are therefore preserved.
- **Return To Main Options Menu** (Option R) - Exits the Tools and Utilities Menu and returns to the Main Options Menu.

## Status Information Pages

NASLite-2 exports a special **Status** share for the purpose of providing server status information. The status information is made available via a number of HTML pages that are automatically updated periodically per the Status Update setting (See Service Configuration Menu). To access the server status pages, click on the `index.htm` page located immediately inside of the Status folder. Your default HTML browser will open and display the initial Status page. At that time you can navigate between the individual status pages by using the provided links.

The initial Status page shows only very basic information about the associated NASLite-2 server. It's intended to provide a quick overview and is useful to quickly identify the current device in networks with multiple NASLite-2 servers. From this point, by clicking on the provided link button, the browser will display additional server information with various details regarding server hardware, settings and status.

Navigation between the Status pages is done via the link buttons to the left of each page. The following status pages are available:



**Server Status** - The Server Status page displays general server configuration settings including network and services.



**Server Storage** - The Server Storage page displays capacity and usage information for all currently shared storage volumes. Additional filesystem and S.M.A.R.T. information for locally-mounted disks is



available via the **Disk-N** links provided on each line. In addition, remote storage details can be obtained using the **Remote Storage** link at the bottom of the page.



**Network Status** - The Network Status page provides detailed network usage information accumulated since last reboot. Hourly, daily, weekly and monthly usage details as well as other network-specific information is displayed.



**System Status** - The System Status page displays system information and status details. Kernel version, system load, RAM usage, CPU type as well as a number of ACPI-specific monitored values are displayed.



**Server Message Log** - The Server Message Log page provides a viewable copy of the current system message log. The system message log contains valuable information that can help in troubleshooting as well as aid in general system administration and maintenance.



**About NASLite-2** - The About NASLite-2 page provides general product description, copyright and licensing information pertaining to NASLite-2.



**Unlock** - The Unlock page is used to help unlock the NASLite-2 server during initial setup. When the server is unlocked, this page displays Unlock Code details.



**Administer NASLite-2** - This is not really a status page but rather a preformatted link to remotely launch the NASLite-2 Administration Utility via TELNET. If your browser is properly configured, clicking on this link will open the local TELNET client and display the associated NASLite-2 login.



**Server Elements Online** - This is not really a status page but a web link to the Server Elements website. The server Elements website will always provide information on the latest NASLite-2 releases and well as details on related products and updates.

Since status pages are not rendered in real time, it is important to keep in mind that the displayed data is a status snapshot of the system state and not current information. Details about update frequency

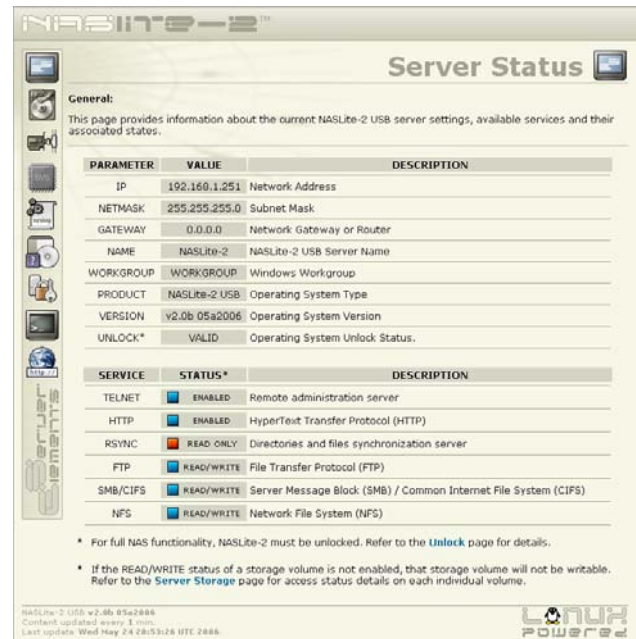
and last update can be found at the bottom-left of each page.

Update frequency can be set to various intervals, from 1 minute to 8 hours. It should be noted that generating the status pages can become a workload burden if set to update every minute, that being especially true on servers with a slower processor or servers that are under constant load.

A number of typical NASLite-2 Status pages illustrating some of the more notable features are shown below:



Typical Status Entry Page



Typical Server Status Page

### Network Status

**General:**  
This page provides network traffic statistics and usage information collected since last system reboot. Estimated values provide a projected total for the current day, week or month. The estimates are based on averages derived from the existing traffic data, so accuracy generally improves as more data becomes available.

**Current Client Connections:**

CLIENT IP	NAME	SMB/CIFS	NFS	FTP	RSYNC	HTTP	TELNET
192.168.100.16	jmarks	<input checked="" type="checkbox"/>	<input type="checkbox"/>	<input type="checkbox"/>	<input type="checkbox"/>	<input type="checkbox"/>	<input type="checkbox"/>
192.168.100.2	dbarns	<input checked="" type="checkbox"/>	<input type="checkbox"/>	<input type="checkbox"/>	<input type="checkbox"/>	<input type="checkbox"/>	<input type="checkbox"/>
192.168.100.21	rhargis	<input checked="" type="checkbox"/>	<input type="checkbox"/>	<input type="checkbox"/>	<input type="checkbox"/>	<input type="checkbox"/>	<input type="checkbox"/>
192.168.100.28	mpolk	<input checked="" type="checkbox"/>	<input type="checkbox"/>	<input type="checkbox"/>	<input type="checkbox"/>	<input type="checkbox"/>	<input type="checkbox"/>
192.168.100.48	jsmith	<input checked="" type="checkbox"/>	<input type="checkbox"/>	<input type="checkbox"/>	<input type="checkbox"/>	<input type="checkbox"/>	<input type="checkbox"/>
192.168.100.50	klowe	<input checked="" type="checkbox"/>	<input type="checkbox"/>	<input type="checkbox"/>	<input type="checkbox"/>	<input type="checkbox"/>	<input type="checkbox"/>
192.168.100.54	bpowell	<input checked="" type="checkbox"/>	<input type="checkbox"/>	<input type="checkbox"/>	<input type="checkbox"/>	<input type="checkbox"/>	<input type="checkbox"/>
192.168.100.56	lboote	<input checked="" type="checkbox"/>	<input type="checkbox"/>	<input type="checkbox"/>	<input type="checkbox"/>	<input type="checkbox"/>	<input type="checkbox"/>
192.168.100.59	woods	<input checked="" type="checkbox"/>	<input type="checkbox"/>	<input type="checkbox"/>	<input type="checkbox"/>	<input type="checkbox"/>	<input type="checkbox"/>
192.168.100.61	fwilke	<input checked="" type="checkbox"/>	<input type="checkbox"/>	<input type="checkbox"/>	<input type="checkbox"/>	<input type="checkbox"/>	<input type="checkbox"/>
192.168.100.62	mstolks	<input checked="" type="checkbox"/>	<input type="checkbox"/>	<input type="checkbox"/>	<input type="checkbox"/>	<input type="checkbox"/>	<input type="checkbox"/>
192.168.100.64	ttonchev	<input checked="" type="checkbox"/>	<input type="checkbox"/>	<input type="checkbox"/>	<input type="checkbox"/>	<input type="checkbox"/>	<input type="checkbox"/>
192.168.100.66	edebona	<input checked="" type="checkbox"/>	<input type="checkbox"/>	<input type="checkbox"/>	<input type="checkbox"/>	<input type="checkbox"/>	<input type="checkbox"/>
192.168.100.74	iheller	<input checked="" type="checkbox"/>	<input type="checkbox"/>	<input type="checkbox"/>	<input type="checkbox"/>	<input type="checkbox"/>	<input type="checkbox"/>
192.168.100.76	iblack	<input checked="" type="checkbox"/>	<input type="checkbox"/>	<input type="checkbox"/>	<input type="checkbox"/>	<input type="checkbox"/>	<input type="checkbox"/>
192.168.100.82	ldowns	<input checked="" type="checkbox"/>	<input type="checkbox"/>	<input type="checkbox"/>	<input type="checkbox"/>	<input type="checkbox"/>	<input type="checkbox"/>
192.168.100.86	pmtodd	<input checked="" type="checkbox"/>	<input type="checkbox"/>	<input type="checkbox"/>	<input type="checkbox"/>	<input type="checkbox"/>	<input type="checkbox"/>
192.168.100.93	djones	<input checked="" type="checkbox"/>	<input type="checkbox"/>	<input type="checkbox"/>	<input type="checkbox"/>	<input type="checkbox"/>	<input type="checkbox"/>
192.168.100.95	dtorez	<input checked="" type="checkbox"/>	<input type="checkbox"/>	<input type="checkbox"/>	<input type="checkbox"/>	<input type="checkbox"/>	<input type="checkbox"/>

**Total Activity:**

RX(%)	RX(MB)	TOTAL	TX(MB)	TX(%)
RX 24%	1796 MB	5332 MB	3535 MB	TX 66%

**Hourly Activity:**

HOURLY TRAFFIC ACTIVITY

HOUR	RX(KB)	TX(KB)	HOUR	RX(KB)	TX(KB)	HOUR	RX(KB)	TX(KB)
22	57	2	06	90	2	14	206054	265016
23	55	2	07	51	2	15	227053	257081
00	142	2097	08	53	2	16	201332	516024
01	49	2	09	49	2	17	61425	125468
02	55	2	10	49	2	18	440064	552387
03	57	2	11	42740	2204	19	290858	894207
04	52	2	12	13152	121411	20	216290	401266
05	50	2	13	72973	88595	21	60586	139938

**Daily Activity:**

DAY	RX(MB)	TX(MB)	TOTAL
29.09.	3.60 MB	242.27 MB	245.87 MB
30.09.	1.34 MB	2.95 MB	4.29 MB
01.10.	1.32 MB	2.87 MB	4.19 MB
02.10.	1790 MB	3287 MB	5077 MB
ESTIMATED	2016 MB	3703 MB	5719 MB

**Weekly Activity:**

PERIOD	RX(MB)	TX(MB)	TOTAL
LAST 7 DAYS	1796 MB	3535 MB	5332 MB
LAST WEEK	6.26 MB	248.10 MB	254.37 MB
CURRENT WEEK	1790 MB	3287 MB	5077 MB
ESTIMATED	14320 MB	26296 MB	40616 MB

**Monthly Activity:**

MONTH	RX(MB)	TX(MB)	TOTAL
SEP '06	4.94 MB	245.22 MB	250.17 MB
OCT '06	1791 MB	3290 MB	5082 MB
ESTIMATED	29611 MB	54394 MB	84005 MB

**Device Details:**

**DEVICE DETAILS**

- eth0: VIA VT6102 Rhine-II at 0xe000, 00:16:ec:3a:12:36, IRQ 7.
- eth0: MII PHY found at address: 1, status: 0x789d advertising 05e1 Link 45e1.
- eth0: Setting full-duplex based on MII #1 link partner capability of 45e1.
- eth0 Link encap:Ethernet HWaddr 00:16:EC:3A:12:36
- inet addr:192.168.100.5 Scope:192.168.100.255 Mask:255.255.255.0
- UP BROADCAST RUNNING MULTICAST MTU:1500 Metric:1
- RX packets:3416089 errors:0 dropped:0 overruns:0 frame:0
- TX packets:3897681 errors:0 dropped:0 overruns:0 carrier:0
- collisions:0 txqueuelen:1000
- RX bytes:1805465262 (1.7 GiB) TX bytes:3708210782 (3.4 GiB)
- Interrupt:7 Base address:0xe000

NAS1000-2 USB v2.0B 05a2088  
Content updated every 1 min.  
Last update Mon Oct 2 21:18:01 UTC 2006

Typical Network Status Page

### Server Storage

**General:**  
This page provides a summary of all available storage volumes. Storage capacities for local as well as currently mounted remote volumes are displayed. Disk temperature is displayed only for local disks that support S.M.A.R.T. and export the temperature attribute. Specific information pertaining to each individual storage disk can be viewed by clicking on the associated link below.

DISK	TOTAL	USED	FREE	STATUS*	S.M.A.R.T.	USAGE
System	7.7M	4.2M	3.5M	<input type="checkbox"/> UNAVAILABLE	<input type="checkbox"/> UNAVAILABLE	USED 55%
Disk-0	146.7G	134.1G	12.6G	<input checked="" type="checkbox"/> READ/WRITE	TEMP 29°C	USED 91% (93%)
Disk-1	146.7G	119.9G	26.8G	<input checked="" type="checkbox"/> READ/WRITE	TEMP 27°C	USED 82% (93%)
Disk-2	9.2G	4.7G	4.1G	<input checked="" type="checkbox"/> READ/WRITE	<input type="checkbox"/> UNAVAILABLE	USED 51% (55%)
192.168.1.3-tmp	27.1G	7.9G	17.8G	<input type="checkbox"/> REMOTE	<input type="checkbox"/> UNAVAILABLE	USED 31%

\* If the READ/WRITE status of a service is not enabled, storage volumes will not be writable via that service. Refer to the [Server Status](#) page for access status details on each individual service.

\* The READ/WRITE status of a remotely-hosted volume is unknown and depends on the remote host configuration. For additional remotely-hosted storage details, refer to the [Remote Storage](#) page.

NAS1000-2 USB v2.0B 05a2088  
Content updated every 1 min.  
Last update Mon May 29 8:14:51 UTC 2006

Typical Server Storage Page

### System Status

**General:**  
This page provides status details pertaining to system load and essential system hardware components.

**Operating System Kernel:**

KERNEL	RELEASE	VERSION
Linux	2.4.31.NASLite	#3 Fri May 5 02:33:37 UTC 2006

**System Uptime and Load Average:**

UPTIME	1 MINUTE*	5 MINUTE*	15 MINUTE*
at 11:27:03 up for 2:47	SYSTEM LOAD 0%	SYSTEM LOAD 0%	SYSTEM LOAD 0%

**System Memory (RAM):**

TOTAL	USED	FREE	BUFFERS	USAGE
233M	27M	206M	0M	USED 11%

**Processor (CPU):**

CPU	MODEL	VENDOR	MHZ	BOGOMIPS	CACHE
i686	VIA Samuel 2	CentaurHauls	800.055	1595.00	64 KB

**Advanced Configuration and Power Interface (ACPI):**

POWER BUTTON	FAN STATE	COOLING MODE	THERMAL STATE	CPU TEMP
<input checked="" type="checkbox"/> AVAILABLE	<input checked="" type="checkbox"/> ON	<input checked="" type="checkbox"/> ACTIVE	<input checked="" type="checkbox"/> OK	TEMP 35°C

\* The system load average provides a measure of the number of active processes at any given time. System load average for 1, 5 and 15 minutes are provided. During heavy activity, it is normal for load averages to spike above 100% for limited periods of time.

NAS1000-2 USB v2.0B 05a2088  
Content updated every 1 min.  
Last update Fri May 19 11:27:03 UTC 2006

Typical System Status Page



## Upgrading from Previous Versions of NASLite

Aside from the obvious differences between previous version of NASLite and NASLite-2, there are a number of subtle changes that may cause some confusion when upgrading an existing NASLite server to a NASLite-2 server.

The most important difference to note is the storage disk naming convention. Due to increased hardware support and storage disk capabilities of NASLite-2, the naming convention for locally mounted storage disks is no longer statically associated with the corresponding hardware port. Disks are now consecutively numbered in order starting from 0 to N where N is based on the total number of disks involved. This difference should be taken into consideration if client machines with pre-mapped network drives will be connecting to the upgraded server. In most cases, without the necessary changes, the results will be less than desirable. To eliminate confusion, ensure that all clients are properly mapped to the correct disks as exported by NASLite-2.

Another note of importance is that disk names may change as storage disks are added or subtracted from the NASLite-2 server. For example, if a NASLite-2 server has 4 IDE storage disks numbered 0 through 3, and the primary slave is removed, on reboot, the server will display available disks 0 through 2. The disks previously named Disk-2 and Disk-3 will now appear as Disk-1 and Disk-2 respectively.

NASLite v1.x configuration settings are not compatible with NASLite-2 configuration settings. NASLite-2 servers have to be configured manually during initial setup.

## Source Components

NASLite-2 is built using a number of proprietary Server Elements components as well as one or more components of the following:

- **Linux Kernel**  
([www.kernel.org](http://www.kernel.org)) - POSIX compliant Unix clone
- **Samba**  
([www.samba.org](http://www.samba.org)) - SMB/CIFS file services
- **Rsync**  
([rsync.samba.org](http://rsync.samba.org)) - Fast, incremental file transfer utility
- **nfs-utils**  
(<http://sourceforge.net/projects/nfs/>) - NFS utilities
- **vsftpd**  
([vsftpd.beasts.org](http://vsftpd.beasts.org)) - FTP services
- **uClibc**  
([www.uclibc.org](http://www.uclibc.org)) - Compact C library
- **BusyBox**  
([www.busybox.net](http://www.busybox.net)) - Compact Unix utilities
- **e2fsprogs**  
([e2fsprogs.sourceforge.net](http://e2fsprogs.sourceforge.net)) - Second extended file system utilities
- **webfs**  
([www.bytesex.org](http://www.bytesex.org)) - Simple HTTP Server
- **smartmontools**  
([smartmontools.sourceforge.net](http://smartmontools.sourceforge.net)) - S.M.A.R.T. utility toolset.
- **Vnstat**  
([www.humdi.net/vnstat/](http://www.humdi.net/vnstat/)) - Compact network traffic monitor

Source code for the GPL portions of NASLite-2 can be found as a torrent or on the Server Elements website ([www.serverelements.com](http://www.serverelements.com)).

## Internet Resources

Additional information, the latest releases, as well as well-mediated user forums covering NASLite-2 and related OS products can be found on the Server Elements ([www.serverelements.com](http://www.serverelements.com)) website. In addition to this manual, the user forums are the best place for information regarding the use, administration and maintenance of your NASLite-2 file server.

## Copyrights and Trademarks

© 2006 Tony Z. Tonchev (tzt@serverelements.com)

© 2006 Ralph Hargis (rh@serverelements.com)

This manual may be reproduced in whole or in part, without fee, subject to the following restrictions:

- The copyright notice above and this permission notice must be preserved complete on all complete or partial copies.
- Any translations or derived works must be approved in writing by the author before distribution.
- If you distribute this work in part, instructions and means for obtaining the complete version of this manual must be included.
- Small portions may be reproduced as illustrations for reviews or quotes in other works without this permission notice if proper citation is given.

## Server Elements Software License Agreement

Server Elements software consists of Open Source software components and proprietary Server Elements software components. The Open Source components are freely distributed under the respective Open Source licenses, Server Elements software is distributed under Server Elements' terms.

**ATTENTION:** USE OF THE SOFTWARE IS SUBJECT TO THE SERVER ELEMENTS SOFTWARE LICENSE TERMS SET FORTH BELOW. USING THE SOFTWARE INDICATES YOUR ACCEPTANCE OF THESE LICENSE TERMS. IF YOU DO NOT ACCEPT THESE LICENSE TERMS, YOU MUST NOT USE THE SOFTWARE.

## Server Elements Software License Terms

The following terms govern your use of the NASLite-2 Software unless you have a separate written agreement with Server Elements.

### LICENSE GRANT

Server Elements grants you a license to Use one copy of the Software. "Use" means storing, loading, installing, executing or

displaying the Software. You may not modify the Software or disable any licensing or control features of the Software. If the Software is licensed for "concurrent use", you may not allow more than the maximum number of authorized users to Use the Software concurrently.

### OWNERSHIP

The Software is owned and copyrighted by Server Elements or its third party suppliers. Your license confers no title or ownership in the Software and is not a sale of any rights in the Software. Server Elements' third party suppliers may protect their rights in the event of any violation of these License Terms.

### COPIES AND ADAPTATIONS

You may only make copies or adaptations of the Software for archival purposes or when copying or adaptation is an essential step in the authorized Use of the Software. You must reproduce all copyright notices in the original Software on all copies or adaptations. You may not copy the Software onto any bulletin board or similar system.

### NO DISASSEMBLY OR DECRYPTION

You may not disassemble or decompile the Software unless Server Elements' prior written consent is obtained. In some jurisdictions, Server Elements' consent may not be required for disassembly or decompilation. Upon request, you will provide Server Elements with reasonably detailed information regarding any disassembly or decompilation. You may not decrypt the Software unless decryption is a necessary part of the operation of the Software.

### TRANSFER

Your license will automatically terminate upon any transfer of the Software. Upon transfer, you must deliver the Software, including any copies and related documentation, to the transferee. The transferee must accept these License Terms as a condition to the transfer.

### TERMINATION

Server Elements may terminate your license upon notice for failure to comply with any of these License Terms. Upon termination, you must immediately destroy the Software, together with all copies, adaptations and merged portions in any form.

## Server Elements Limited Warranty Statement

THIS SOFTWARE IS PROVIDED BY THE COPYRIGHT HOLDERS AND CONTRIBUTORS "AS IS" AND ANY EXPRESS OR IMPLIED WARRANTIES, INCLUDING, BUT NOT LIMITED TO, THE IMPLIED WARRANTIES OF MERCHANTABILITY AND FITNESS FOR A PARTICULAR PURPOSE ARE DISCLAIMED. IN NO EVENT SHALL THE REGENTS OR CONTRIBUTORS BE LIABLE FOR ANY DIRECT, INDIRECT, INCIDENTAL, SPECIAL, EXEMPLARY, OR CONSEQUENTIAL DAMAGES (INCLUDING, BUT NOT LIMITED TO, PROCUREMENT OF SUBSTITUTE GOODS OR SERVICES; LOSS OF USE, DATA, OR PROFITS; OR BUSINESS INTERRUPTION) HOWEVER CAUSED AND ON ANY THEORY OF LIABILITY, WHETHER IN CONTRACT, STRICT LIABILITY, OR TORT (INCLUDING NEGLIGENCE OR OTHERWISE) ARISING IN ANY WAY OUT OF THE USE OF THIS SOFTWARE, EVEN IF ADVISED OF THE POSSIBILITY OF SUCH DAMAGE.